

SPACE X FILE

commercial space

VOL.02

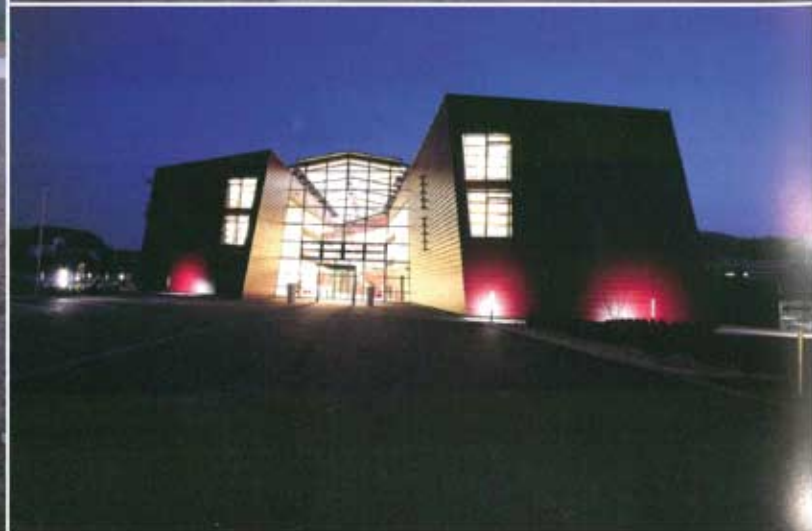
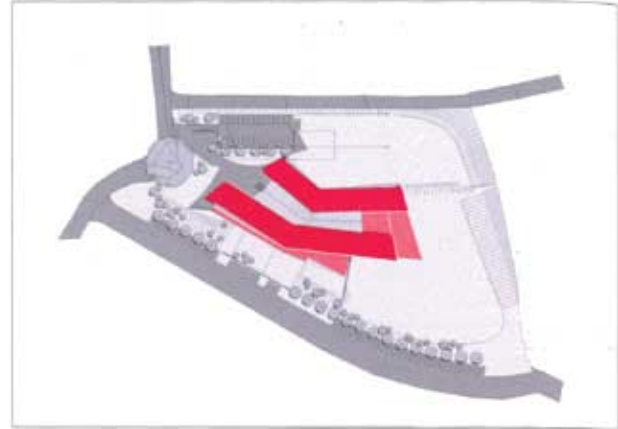
RIHAN.CC
H.K. RIHAN INT'L CULTURE SPREAD LIMITED

SPA HOTEL BRÜNDL

Location: Bad Leonfelden, Austria
Designer: TEAM M Architekten
Photography: Isa Stein
Area: 17,600 m²

The building develops its form from the specific site. The designer gave the project the name "three-dimensional earthline". The building has two axes, which bend and rotate along the vertical line. All 68 rooms are in the two axes, which are connected through a 3-story high hall.

They used earthcolored Max-boards, which they used in a shed way. The theme earthlines is also dominating in the café, sauna and reception desks. Even the rooms have repetitious elements, the rotating cover of shedded plates gives every room a special touch.

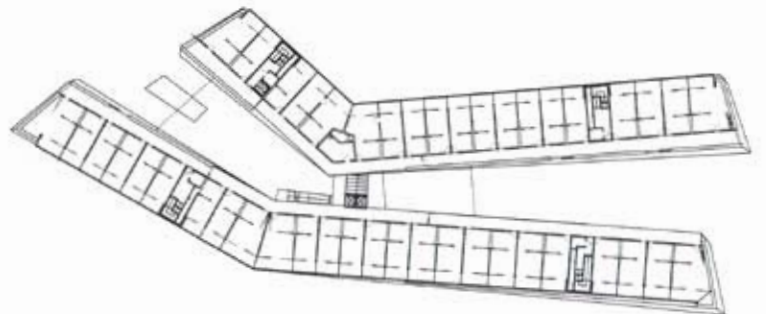
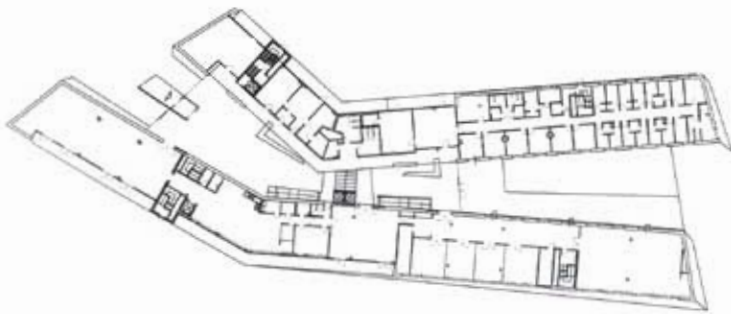














SIMONE MICHELI ARCHITECTURAL HERO

Simone Micheli is a professor. He founded the architectural studio with his name in 1990 and the Design Company "Simone Micheli Architectural Hero" in 2003. His works concerning architecture, contract, interior design, exhibit design, design, graphic and communication are strictly linked to the sensorial glorification. Over the years he has signed various architectural projects, interior projects and exhibitions related to the domestic and the contract world. He designed various objects for some of the most qualified European companies of this field. He exposed his projects at the Biennale di Venezia, Architecture section. He is the curator of some thematic "contract" exhibitions in the most important international fairs of this field. He represented Italian interior design taking part to the XXX Congreso Colombiano de Arquitectura in Baranquilla-Colombia and participating at the International Conference of Architecture in Hanover (Germany). Interviews and films about his works have been realized by the Italian network "Mediaset, "Rai", "Sky - Leonardo - Alice-

Gambero Rosso" and the international "Tele France", Swiss television, Chinese and Korean channels.

Among the most recent prizes we recall: the "Design Plus 2007", a special prize in the bathroom sector and the "Comfort & Design 2008" an international prize for the care, the pursuit of excellence and innovation, with the radiator "Badge" for Cordivari, the "Best Interior Design" and "Best Apartment Italy" in the competition "Homes Overseas Award 2007" London, the international competition for the best residential real estate development projects in the world, with the project of Golfo Gabella Lake Resort for Sist Group; the "European Architectural Award Plaster 2008", an international prize for Casa Rizzo.

His works are published on the most important Italian and international magazines.

For the consultation of his works, please visit the web site www.simonemicheli.com.

SUNNIN CO.,LTD.

Sunnin Design is an international brand in the upper segment of the market. Modern, timeless design, specially selected materials and high quality manufacturing are the brand's most important characteristics (made in Japan). Sunnin was founded in 2005 in Tokyo, Japan. Today the company has its head quarters in Tokyo. Most of the furniture is manufactured in the kyushu, chubu, kanto area and sold worldwide through selected retail partners.

Description of Business:

Interior design (office/store/hotel/exhibition/showroom/home)

Furniture design and sales (Tokyo Dresser/Tokyo Bench and TOKYO id series)

Renovation and construction (home/old condominium)

Graphic design (store/office)



TEAM M ARCHITECTS

Arch. Prof. Dipl.-Ing. Wolfgang Steinlechner
Born: June 5th 1942 in Linz

Career

1963 - 1970 University of Technology, Graz, Austria
1970 - 1973 Employee in different firms national, international
1973 - 1989 Assistant professor at HTBLA | in Linz
foundation of Team M architects with two partners
from 1993 100% owner of TEAM M architects

Awards, highlights

1993 Highest honor from Upper Austria for achievements

in Architecture in Upper Austria

1997 First prize for achievements in domestic architecture from Lower Austria

1998 Golden medal from Upper Austria

1999 DuPont Benedictus Awards for the passage of the casino in Linz, Austria. International Glas award for the elevator expansion at the Museum of Upper Austria

2003 30years celebration of TEAM M architects



VOID PLANNING

VOID planning, established by Shin-Jae Kang and Hee-Young Choi in 1997, takes great pride in their successful history built upon creative design. They have been honored with awards for outstanding achievement locally and internationally. VOID planning have received Best Awards from "Korea Interior Design Awards" in 2002-2004, Silver Prize from "Japan Commercial Design Award" in 2004 and Best of Category from "Contract World Award (German)" in 2005 under "hotel & Restaurant" category. There are more prizes on the list as seen at the end of this paper.

As a leading interior design company in Korea, VOID planning has specialties in broad areas of design such as office, retail, hospitality, residential and exhibition spaces. Their success in these areas is attested to by the strength of their designs, and close collaboration with clients in over ten years of practice. VOID planning has always been pursuing the challenge of novelty. Their designers are working together in unity and developing the executive ability of concept development;

construction document, and project management. The solidity is one of the big properties of VOID planning.

Nature has been their design inspiration as it is the origin of everything that exists. They approach to reflect the characters of nature through different process of design in a very careful way. They do not want their client or other people to just see the nature in the space but to feel and experience the nature through out their interaction. There are miracles happening behind their eyes like a wild flower penetrating through asphalt. VOID planning believe that "nature" doesn't always need to carry serious philosophical meanings. As it never can be defined by human's sensibilities, they will continue our effort to create new experiences inspired by wonder of nature. Space designed with the "wonder of nature" will always be activated by the human interactions.